

Specimen List for customers (updated 8/27/24)

Dear Orchid Friends,

Thank you for downloading Santa Barbara Orchid Estate's Specimen List from August 27, 2024.

We tried to have a variety of genera and growing conditions on this list- if there is a type you are interested in, but don't see on this list, just ask and we will keep an eye out for that type to add to the next update. Because we do not guarantee that these plants will survive, thrive, and bloom under your conditions, these plants are only recommended for experienced growers and those with orchid care-takers experienced with the particular species/grex. If you, however, are just "window shopping", you can dream of what your own small plants may become with time, proper care, and not being in a hurry to divide your plants. Would you rather have ten small diamonds or one big diamond???

Plant Name: We cannot guarantee that the plant is labeled correctly due to taxonomic complexity, the absence of award photos for some older plants, and plants sold to us mislabeled. Most specimens are shown actually in bloom, so you can judge the name yourself. A few, such as specimens 27 and 88 contain flower photos from our archives. As these specimens bloom during the coming year, we will strive to get pictures of the specimen itself in bloom.

Growing Conditions: The past two wet winters have changed our ideas of "Temperature Tolerance". The potted Mexican Laelias suffered and some died in the relentless cold rains of 2023 and 2024. For Winter we now recommend bringing valuable plants under cover (out of the winter rain) and some more marginal plants into the garage or house during cold and wet times. Because rain amounts and temperatures vary so much in California (and the whole US), you will need to use all of your orchid growing experience and years of observing orchids to keep these specimens safe if they are mainly to be grown outside. Greenhouse growers should have it easier, at least in winter.

Stated pot and basket sizes: The pot and basket measurement stated in this list should be considered approximate. They were measured on the specimen with a tape measure, but due to the size of the plant, it was usually difficult to get to close to the pot/basket. If you would like the exact pot/basket size, we can figure what brand/type of pot/basket the specimen is in and measure the outer diameter, inner diameter, and height from an empty pot/basket. On some plants another pot may have been added since the picture was taken.

Date of pictures/state of the plant. We have been working on this list for more than a year, so the pictures may not be current and descriptions are rather hit or miss. Feel free to ask for information we have omitted, so we can let you know and add it to the next update.

Reserving your specimen: First come, first served. Due to the singular availability of each plant, credit card and shipping information are required to reserve each specimen. We will charge your credit card for the plant price the day you reserve the specimen. We recommend e-mailing a list (with specimen number and whole plant name) of the specimen(s) you would like and the best phone number/call times to reach you to get your credit card and shipping information, if you don't have them on file. E-mails are useful because they show the time of the order. We recommend the plants being shipped or picked up as soon as possible. Some plants are noted as being unshippable by fedex at reasonable prices due to the size or geometry of the specimen. If picking these up is not an option, palletization may be an option, but the freight is even more expensive.

Happy Reading,

- 2) **XBO092218** Oncidium Gower Ramsey, big yellow lip, in redwood basket, hanging. This is the quintessential oncidium hybrid. It grows and blooms well for us in our unheated glass house. We vaguely recollect they grew and bloomed well under shade cloth but are not 100% certain. On 6/25/24 it has 11 green and 6 new pseudobulbs.

\$325.00



24) **CLA1656** Laelia Santa Barbara Sunset 'Streaker'. Blooms Winter-early Spring. For decades these plants did well outside under shadecloth in the rain until the wet and cold Winter of 2023, during which time they suffered. This lucky specimen happened to be inside. Lowermost picture shows this plant in the SBOE exhibit at the March 2024 SB Orchid Show. 12" pot, 31 leads. Fall 2024 has 25 new growths.

\$3,250.00



- 26) **CBO3616** Vanda Splish Splash 'Sunset Magic', from the cross *suavis* x Jose Coronado. Blooms on and off through Spring-Fall. hanging, 26" plant, 46" long roots, 10" wooden basket. Grown under unheated glass at SBOE, but never tested for winter rain.

\$300.00



27) **CBO1550** Laelia Splendid Spire 'Lavender Lovely' from the cross *splendida* x *anceps*, Plant is growing to 1 side, which is useful in some situations. This cross did well outside in the rain under shade cloth until the wet and cold winter of 2023. This specimen happened to be growing under glass. lavender cluster type. Sweet fragrance. 14" pot.

\$750.00



28) **CBO2877** *Brassavola perrinii* 'Moonlight' (Kew says this is now *tuberculata*, native to Boliva, Brazil, and NE Argentina). We grow this without Winter heat, but it is protected from Winter rain.

\$5,000.00

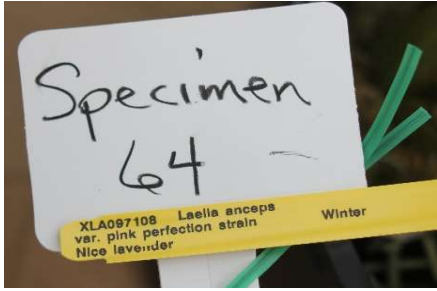
Huge hanging (unshippable,), Lt green with large round white lip, Summer is usual bloom time..

12" wooden basket, 60-70 spikes in Sumer 2024. Plant likely basketed in June 2008. Due to weight of plant and its age, hanger, basket, or both might break. Best transported hanging in the center of a van/truck with ropes to stabilize, Need to pre-arrange pickup on a day with lots of muscle available. (photos taken 5/28/24)



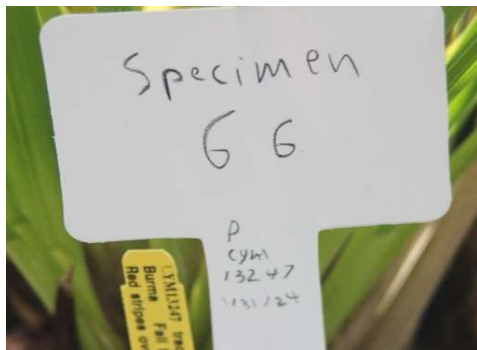
64) XLA097108 *Laelia anceps* var. pink perfection strain, nice lavender. Winter 2024 had 5 spikes of between 24"-34" in length, 8" green pot sitting in a 12" black tub, Fall 2024 has 5 new growths.

\$150.00



- 66) CYM13247 *Cymbidium tracyanum*, in a 12" black tub, red stripes over bronze, fragrant species from Burma, usually Fall blooming but bloomed Jan-Feb in 2024, when it had 3 spikes. If spikes are not staked, they arch beautifully. One of our favorite plants to have as a specimen and one of the few generally Fall-blooming cymbidium. Should only get better because this specimen was potted in June 2023. Summer 2024 has 3 new growths.

\$400.00



- 69) CLA1896 *Laelia anceps* 'SanBar Pink Pearl', very good, light lavender with yellow in throat and dark magenta on lip, Overall Flower Width =9.5cm, Petal Width =4.0cm, Dorsal Sepal Width =2.2cm. Winter blooming, plant is 70"wide x 40"tall, in 24" black tub. Plant not shippable. Large vehicle required for transport. Pickup must be pre-arranged for a day with sufficient muscle power. Plant did well outside past two Winters. Fall 2024 has 47 new growths.

\$3,500.00



- 71) Cym7312 Cymbidium Patricia Kerwood 'Paso Robles', HCC/AOS, 9 spikes in Spring 2024, plant is 66"wide x 40"tall, in a black tub 9-1/2" tall x 10"wide, flowers are apple-green with ivory, lip with maroon, OW=11cm. (photos taken 4/9/24)

\$500.00



72) Cym6266 Levis Duke 'Butterball', AM/AOS SM/CSA, 10 spikes Spring of 2024, plant is 57"wide x 36"tall, in a black tub 9-1/2"tall x 10"wide, flowers are large yellow-green with red on lip, pseudobulbs are large.

\$500.00



- 73) CBO1772 *Dendrobium kingianum* '#4', Australia, 43 spikes in Spring 2024, plant is 26"wide x 27"tall, hanging in a 6" pot, 8" to 11" spikes grow straight up, and are covered in purple flowers, NS=1-3/4". (photos taken 4/9/24)

\$2,000.00



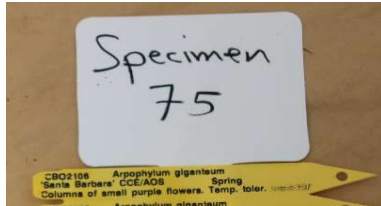
- 74) CBO2106 *Arpophyllum giganteum* 'Santa Barbara', 27"wide x 16"tall, 4 spikes in Spring 2024, hanging in a 6" green pot, temperature tolerant. During the cold wet Winter of 2023 our plants out in the rain only developed a few small black spots on their leaves. Species from Central America distantly related to the genus *Cattleya*. (photos taken 5/27/24)

\$400.00



- 75) CBP2106 *Arpophyllum giganteum* 'Santa Barbara', 31"wide x 20"tall, Spring of 2024 has 4 spikes, in a redwood basket 5"tall x 10"wide, 8" to 11" spikes grow straight up, and are covered in tiny purple flowers, temperature tolerant. During the cold wet Winter of 2023 our plants out in the rain only developed a few small black spots on their leaves. Species from Central America distantly related to the genus *Cattleya*. (photos taken 5/27/24)

\$750.00



- 76) CBO1967 *Rangaeria amaniensis*, 40" tall including hanging roots by 18"wide. In a 6" cedar basket, hanging, flowers are star shaped, each has a nectar-spur, open creamy and yellow with age. Light sweet fragrance during the day. Roughly native eastern equatorial Africa. (photos taken 5/27/24)

\$400.00

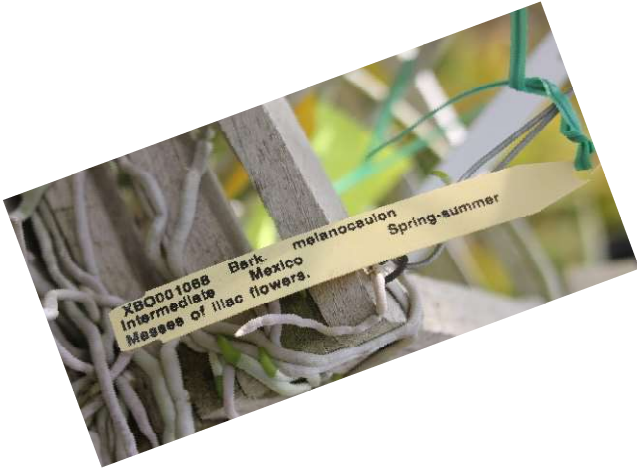


- 77) XBO014065 Vanda Java Jive (Manuel Torres x suasvis), \$600.00
36" tall includes hanging roots, in a 14" redwood basket, flowers are purple with spotting, in late Spring 2024 had 2 spikes with 7-8 flowers per spike, OW=4-1/2". Grown under unheated glass for many years, so untested under cold Winter rain. (photos taken 5/27/24



- 78) XBO001068 *Barkeria melanocaulon*, 10" wooden basket, overall height 64" (roots hanging below basket 28", plant and spikes reach 32" above basket), masses of lilac flowers, Spring-Summer, Mexico. Temperature tolerant but prefers to be out of Winter rains due to its Winter deciduous nature.

\$250.00



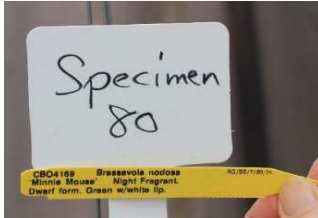
- 79) XBO001068 *Barkeria melanoaulon*, 10" wooden basket, overall height 94" (roots hanging below basket 48", plant and spikes reach 42" above basket), masses of lilac flowers, Spring-Summer, Mexico. Temperature tolerant, but prefers to be out of Winter rains due to its Winter deciduous nature.

\$400.00



- 80) CBO4169 *Brassavola nodosa* 'Minnie Mouse', dwarf form, night fragrant but in the home may require special giggering to initiate smell (e.g. keep in nighttime darkness), flower green with white lip, pointed leaves, 4" wooden basket, overall height 13" (roots hang 7" below basket) by 13" wide, 11 spikes in bloom in July, Intermediate growing.

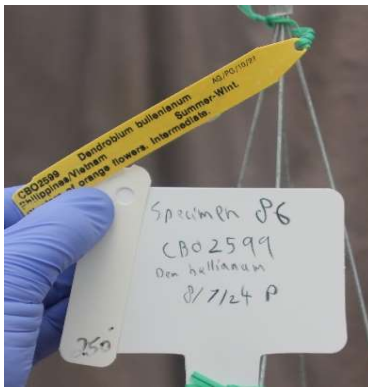
\$200.00



\$375.00

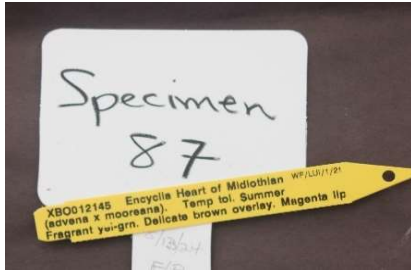
- 86) CBO2599 *Dendrobium bullenianum*, Intermediate grower, blooms Summer-Winter, Phillipines/Vietnam,

This species has a flush of widespread clusters of small yellow-orange flowers 2-3 times per year, based on our greenhouse experience at SBOE and what various books say. It is perfectly happy with year 'round water, unlike most other cane-type *Dendrobium*s that require a dry winter and annoyingly copious amounts of water in the summer. It does need to be inside in the winter due to its Phillipine origin. Planted in an 8" slatted redwood basket. In August of 2024 this specimen had seven blooming canes and four leads. Plant is approximately 36" wide and 30" high



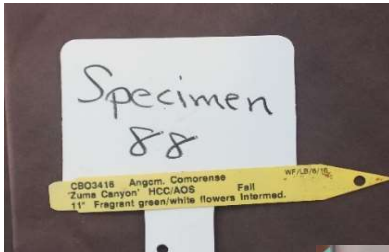
\$400.00

- 87) XBO012145 Encyclia Heart of Medlothian (*advena* x *moreana*), in a 12" wooden basket, roots have attached to the plastic tray, overall height 35" tall by 39" wide, 4 spikes in bloom in July-August, longest spike is 42". Light fruity fragrance. Summer of 2024 has 5 new growths.



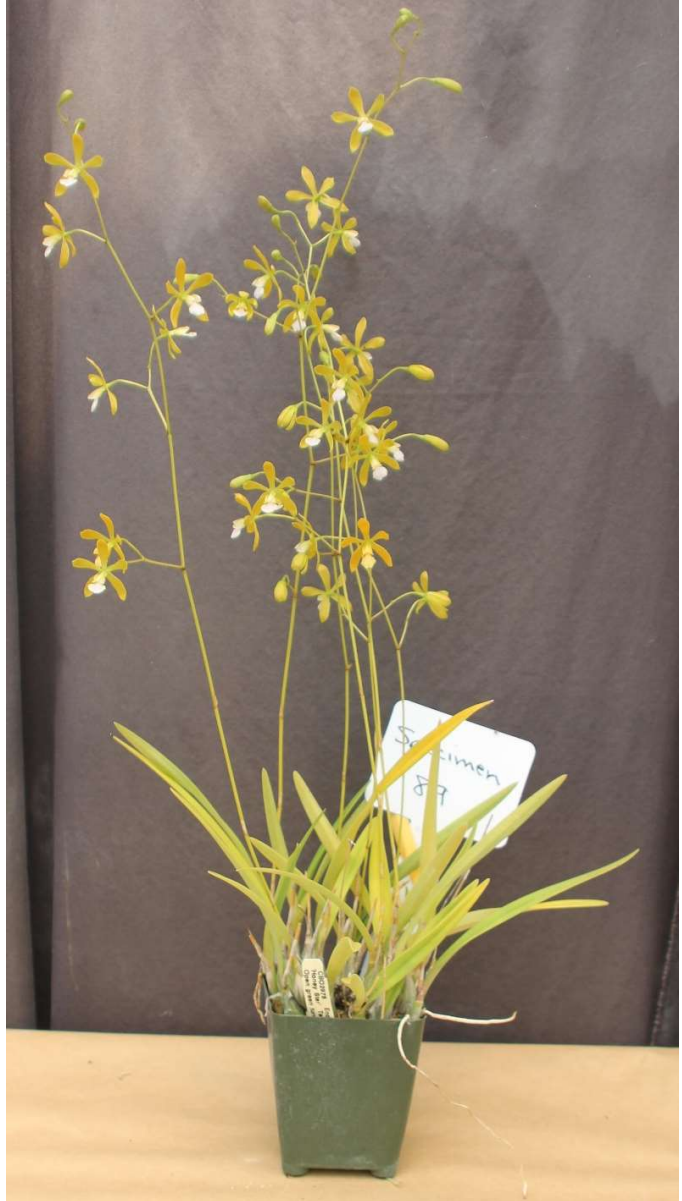
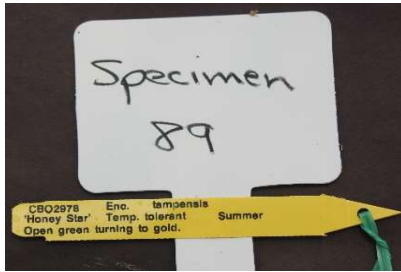
- 88) CBO3416 *Angraecum comorense* 'Zuma Canyon'
HCC/AOS, 11" fragrant green/white flowers, Intermediate to
temperature tolerant, but protect from Winter rains and keep
an eye out for Winter stress, in a 5" black pot sitting inside a
10" black pot, overall height 35" tall by 41" wide, 23" long
spikes in bud, two new growths.

\$600.00



- 89) CBO2978 *Encyclia tampensis* Honey Star, in a 2" green pot sitting inside a 3" green pot, overall height 26" tall by 16" wide, these spikes grew straight, blooms open green and age to gold, Summer bloomer. Light fresh fragrance, Florida-Bahamas. A species with large variation in foliage size and flower color. Intermediate to temperature tolerant, although would prefer to be protected from Winter rain, especially if potted rather than mounted.

\$210.00



- 90) B0000010 *Brassavola acaulis*, mounted on cork, light fragrance, flower is large pendant white, leaves are long, thick and pointy, overall height 31" tall x 14" wide. Has 6 leads, and approximately 35 leaves. Intermediate grower, Summer bloomer, Mexico-Panama.

\$150.00

